



# TRANSFORMER™

## FEATURES & BENEFITS:

**CORE TECHNOLOGY:** Morph-Wing™ Core... The Morph-Wing Core is a dynamic asymmetric masterpiece that transforms unlike any other asymmetric shape when drilled. Mass displacement when drilling into the wing changes the core numbers more than any other asymmetric part on the market today thus providing a completely different flare pattern and motion based on the transformation of the core shape.

**COVER TECHNOLOGY:** V-R1™ Solid Reactive... The Versatile Response Solid material provides the most balanced and reliable traction-to-reaction ratio of any of our nano-free materials to date.

**PERFORMANCE SYNOPSIS:** Without a doubt the TRANSFORMER has the most transformable and tunable hook potential and breakpoint shape on the market today thanks to its unique core design making it super easy to add a specific motion to any arsenal.



## PRODUCT DETAILS:

**COVERSTOCK:** V-R1™ Solid Reactive

**CORE:** Morph-Wing™ Core

**COLOR:** Indigo / Violet / Slate

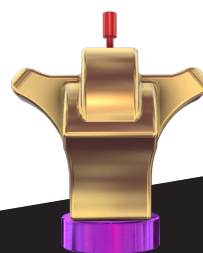
**FINISH:** 4000 Abralon®

**CONDITION:** Medium to Medium/Heavy

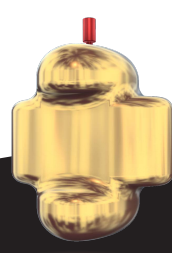
**FLARE POTENTIAL:** High

**AVAILABLE WEIGHTS:** 16 – 12 lbs.

**PRODUCT SKU:** RLL



16-14 lbs.



13-12 lbs.

WEIGHT	RG	DIFF	PSA
16 lbs.	2.50	.050	.015
15 lbs.	2.51	.051	.015
14 lbs.	2.53	.053	.013
13 lbs.	2.57	.032	.010
12 lbs.	2.59	.029	.008



VISIT  
**ROTOGRIP.COM**  
FOR MORE DETAILS